



NEW PRODUCTS AND FUNCTIONS IN 2011

- **FAB TELETEXT DATA GENERATOR FOR HD-SDI**
- **FAB SUBTITLER**
 - Playback of video files for preparation of subtitles
 - Insertion of subtitles into video files in FAB Subtitler MPEG
 - Speech interface in FAB Subtitler LIVE
 - New functions available in all FAB Subtitler Editions
 - 3D subtitling integration in FAB Subtitler
- **FAB SUBTITLER BCAST**
- **FAB MEDIA CONVERTER**
- **FAB DVB INTERFACE**
- **FAB SUBTITLE DATABASE**
- **FAB WEB ACCESS**
- **FAB SOFTWARE ASSURANCE**

For detailed information visit: www.fab-online.com

FAB TELETEXT DATA GENERATOR FOR HD-SDI

FAB Teletext Data Generator and FAB Teletext Data Bridge products are used for insertion of teletext and teletext subtitles into SDI video.

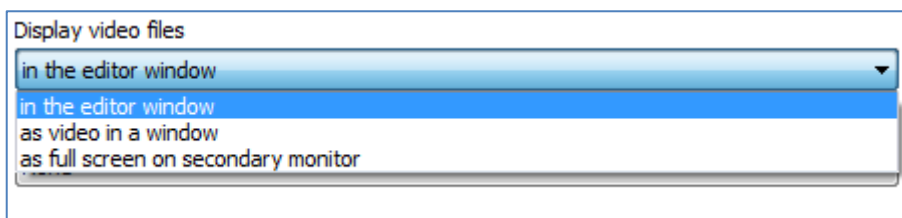
- New versions of FAB Teletext Data Generator FT-DGS 5 and FAB Teletext Data Bridge FT-DBR 5
- Insertion of teletext data into HD-SDI and SD-SDI video will be supported
- SMPTE 2031 and OP47 standards will be supported
- Bypass relay is included in SDI insertion video path for broadcast applications
- The products will become available in the next months
- The product is based on HP ProLiant DL360 Server with special FAB plug-in card
- Redundant power supply and mirrored RAID-1 hard disk are delivered as standard
- Completely compatible with current FT-DGS 4 and FT-DBR 4 models



FAB SUBTITLER

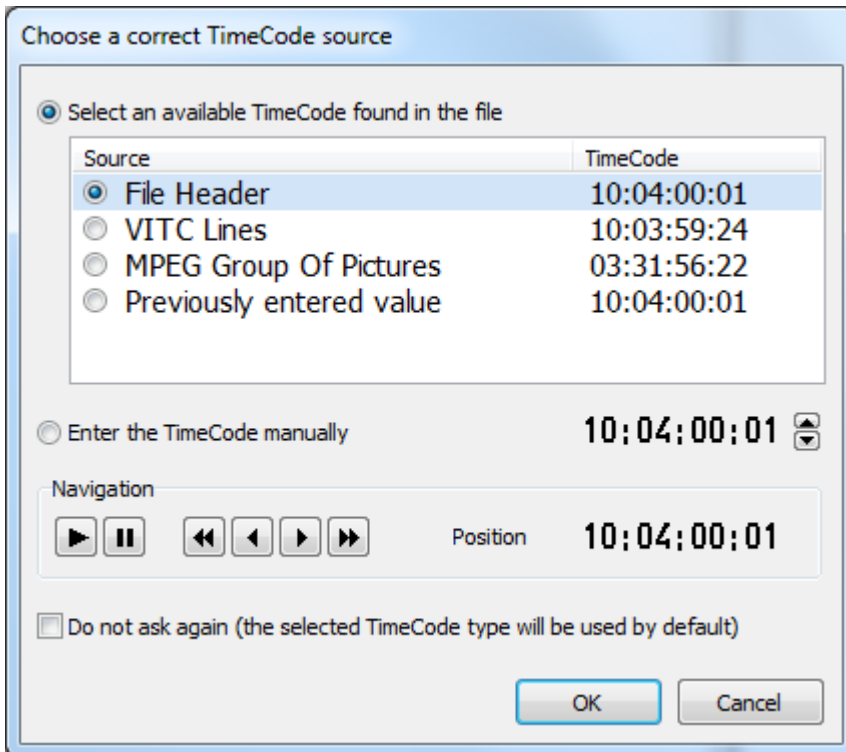
Playback of video files for preparation of subtitles

- MP4/MOV/Quicktime/H.264 video files can be opened directly in FAB Subtitler
- MPEG-1 and MPEG-2 files are directly processed by FAB Subtitler and therefore the navigation through these files is much faster and more reliable
- VOB files from DVDs can be opened directly in FAB Subtitler. If multiple titles are present on the DVD then FAB Subtitler will show a window for selection of the DVD title
- MXF files with MPEG-2 SD/HD and DV video can be opened in FAB Subtitler
- The open source codec library “ffdsHOW” is used for decoding of various MPEG video formats. The number of different video formats/codecs that are supported for opening a video file has been highly increased (MPEG1, MPEG2, MPEG4, H.264, DV, WMV, VC1, ...)
- Playback of video files is using the GPU (Graphical Processing Unit) of the graphic card. This allows playing HD video files also on less powerful PCs
- Aspect ratio (4:3, 16:9) for display of video files can be selected in Options or in the Display Menu
- A new setting in Options allows selecting the default display mode of the video file. When two monitors are connected to the PC it is possible to view the video as full screen on the secondary monitor

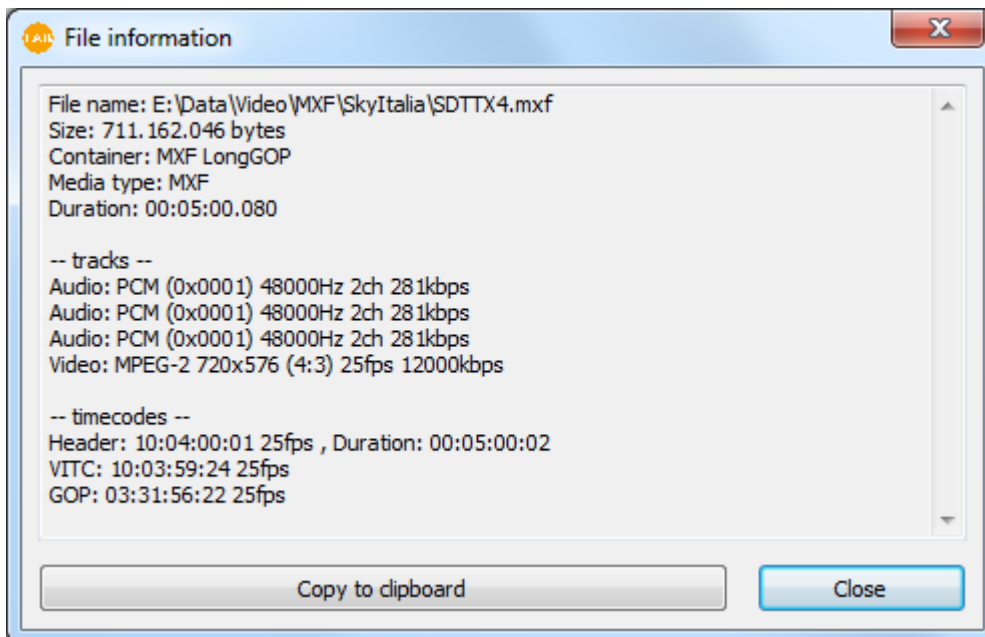


- Audio graph and scene cut thumbnails (when present in the file) are displayed much faster

- When a video file contains more than one timecode a window for selection is displayed:



- After opening a video file the details about the video file can be displayed in the menu Video



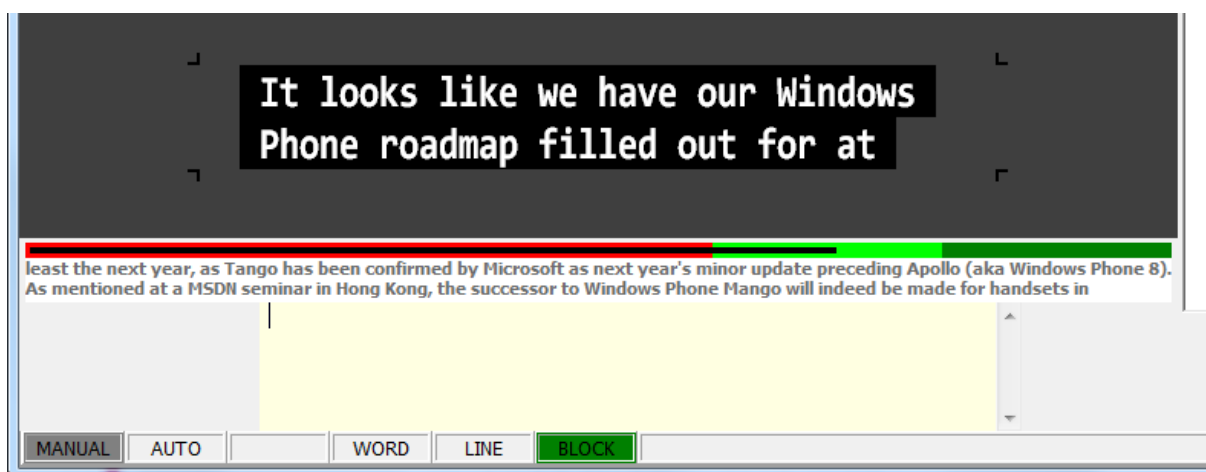
Insertion of subtitles into video files in FAB Subtitler MPEG

- XDCAM MXF HD video files are supported

Speech interface in FAB Subtitler LIVE

The speech interface is used for dictation of text for live subtitling with help of Dragon Naturally Speaking speech recognition engine.

- The speech interface user interface was slightly redesigned
- The size of the editor field can be vertically resized by using the mouse
- A duration bar displays the optimum duration of the transmitted subtitle

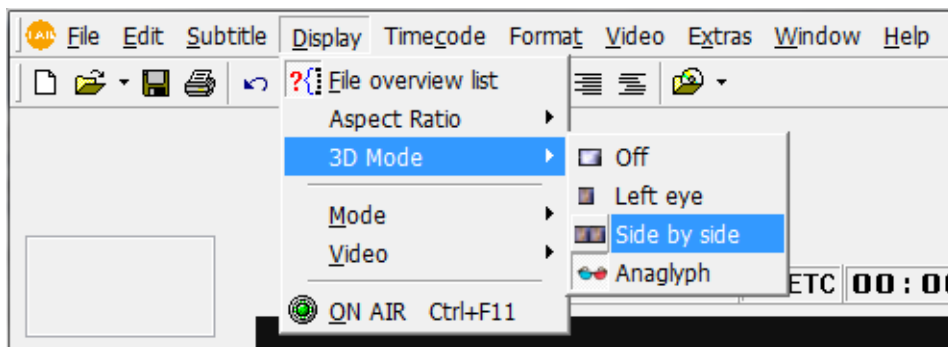


New functions available in all FAB Subtitler Editions

- Toolbar button configuration is stored in the .FCF configuration file and is restored when loading the .FCF configuration file
- XML DFXP Timed Text files can be imported. Only text and timecode are imported
- XML Export for Final Cut Pro has been implemented

3D subtitling integration in FAB Subtitler

- Subtitles for 3D content can have the so called “Z-Position” which allows displaying the subtitle closer to the viewer or even behind the display surface. The “Z-Position” can be defined in FAB Subtitler
- Video files in “Side by side 3D” format can be opened in FAB Subtitler for preparation of subtitles. They can be displayed in one of the following ways:
 - “Anaglyph” preview in editor or video window with low cost red-cyan colored glasses
 - “Side-by-side” on secondary monitor with a 3D TV connected over HDMI cable
 - “Single eye” directly in editor or video window for simple preview without 3D

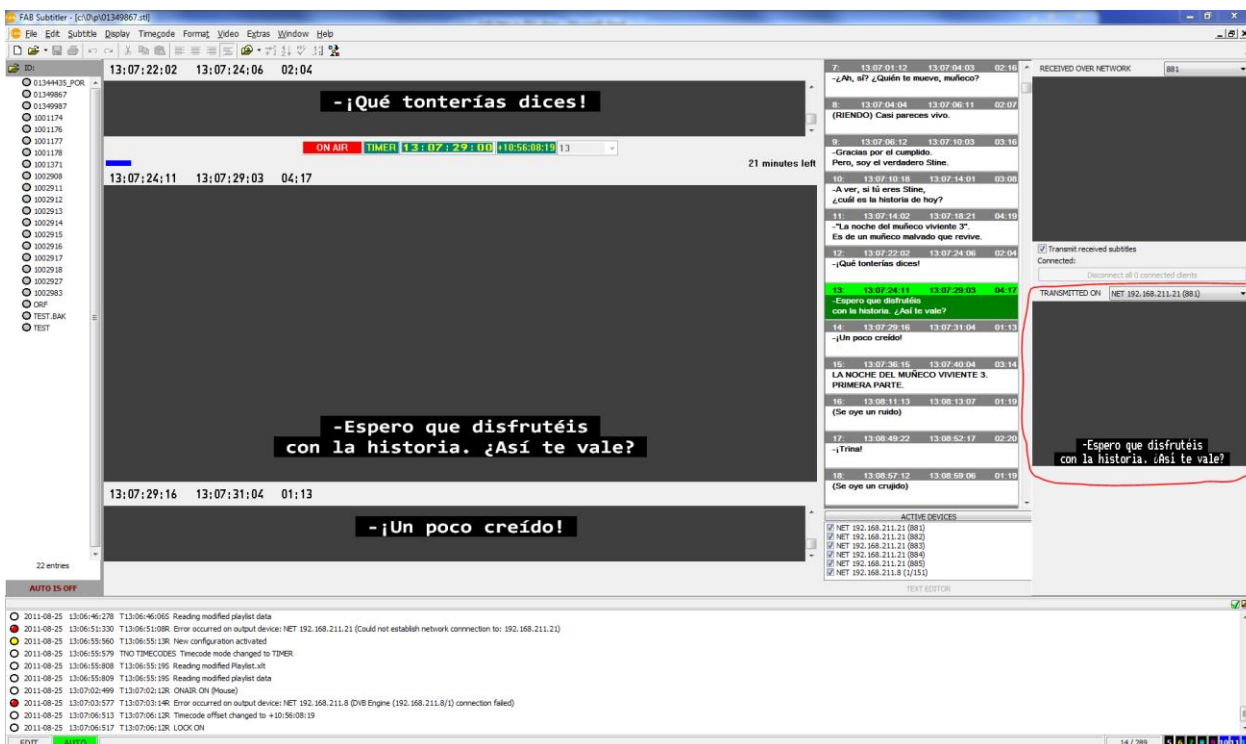


- 3D Export to Digital Cinema is implemented
- 3D Export to Blu-ray Sony BDN with OFS file is implemented
- 3D open subtitles can be inserted into “Side by side 3D” MXF video files

FAB SUBTITLER BCAST

FAB Subtitler BCAST is used for automatic transmission of subtitles controlled by automation system

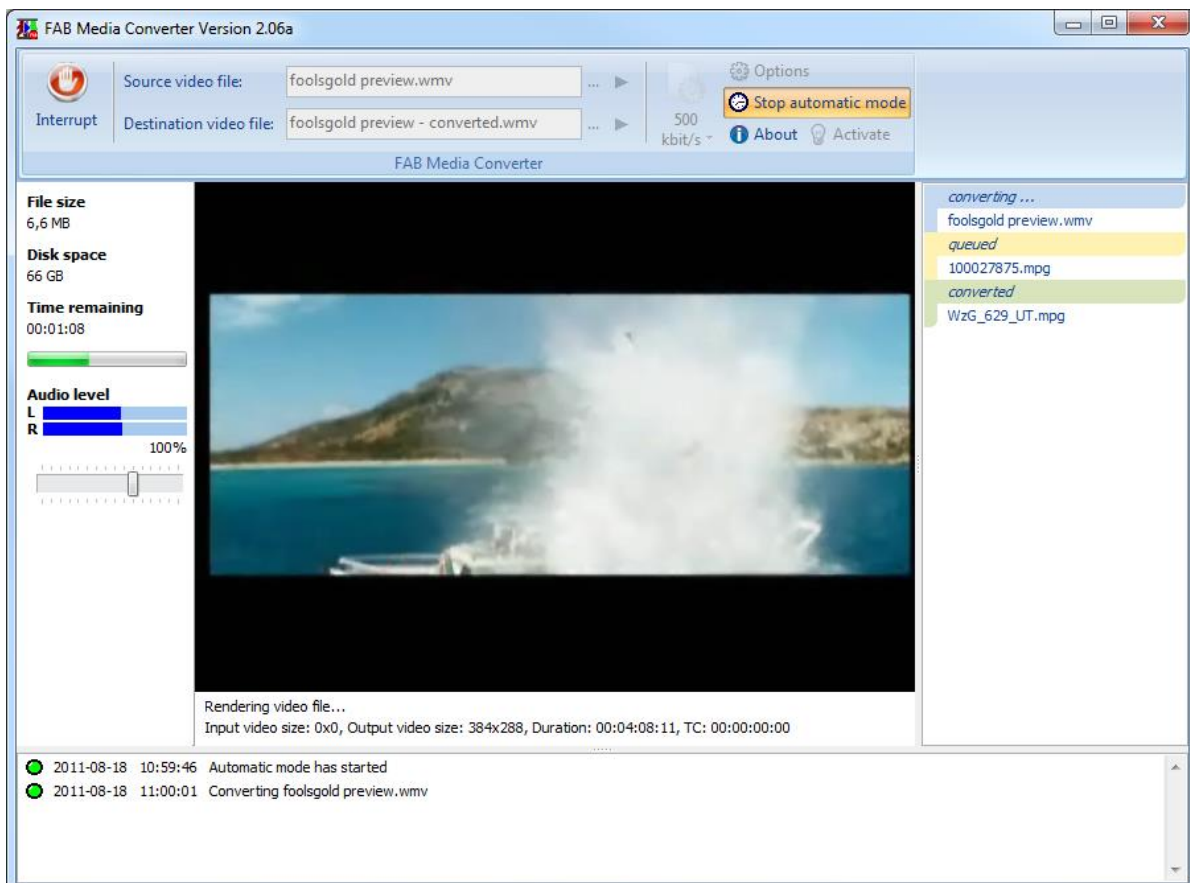
- Connection to Pebble Beach Automation is supported
- Repeated automation IDs in playlist are reported in log
- Support for transmission of multiple languages and multiple channels from a single PC was improved
- Subtitle files are loaded within approx. 0.2 seconds which allows transmission of subtitles also for very short commercial videos
- A log file with transmitted subtitles for every automation ID can be stored also in XML format suitable for subtitling internet video files in Flash format
- Remapping of automation IDs received from automation system to different IDs is supported
- Subtitles transmitted to different output devices can be displayed on the main screen. This avoids the necessity to insert subtitles into SDI video for quality



FAB MEDIA CONVERTER

FAB Media Converter is a software package for conversion of video files to low resolution WMV video files that are used for preparation of subtitles

- Following input video formats are supported:
 - MPEG1/MPEG2/MPEG4
 - MXF with MPEG2/DV video, SD & HD
 - WMV, MOV, TS, AVI, VOB
- Timecode is read from source video file and written into the converted video file
- Visible timecode and user defined visible text can be inserted into the video file
- Scene change detection is performed during conversion and scene changes are displayed in FAB Subtitler
- The framerate of the input video file can be converted to a standard 25/29.97 fps framerate
- Automatic conversion with watchfolder has been implemented. In this mode, FAB Media Converter will wait for files to appear in the input watchfolder. Files are automatically converted and placed in the output folder. User can change the conversion order and force conversion of already converted files.



FAB DVB INTERFACE

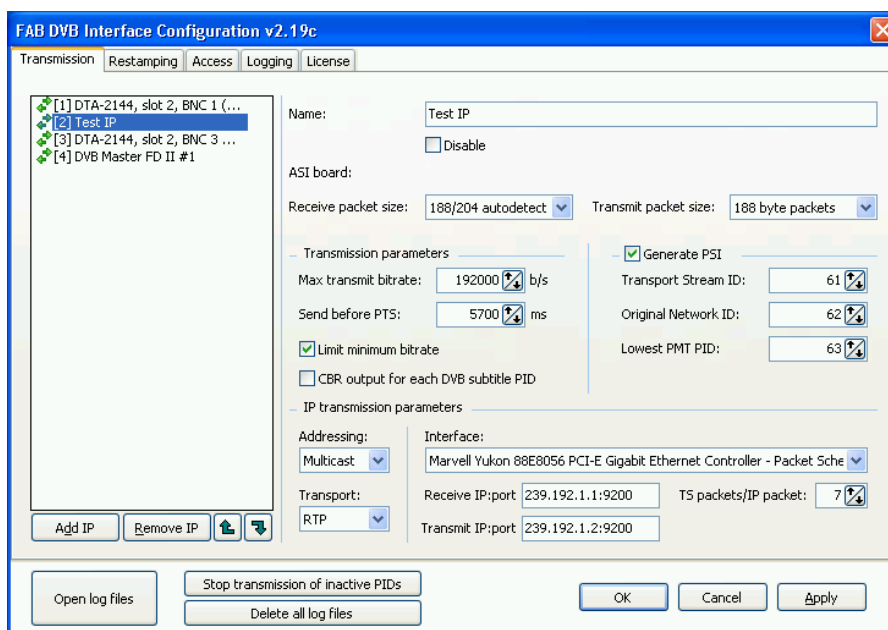
FAB DVB Interface is a software package for transmission of DVB subtitles to a DVB multiplexer over ASI or IP

- FAB HD DVB subtitles are regularly transmitted on DVB-S Astra channel “Das Erste HD” which is not scrambled and can be received by all HD DVB-S2 receivers. If you would like to check if your HD satellite receiver can display HD DVB subtitles simply tune to this channel:

ASTRA-Transponder 11, 11.362 MHz, horizontal, SR 22.000, FEC 2/3, DVB-S2, 8PSK

Subtitled programs are marked with “UT” on teletext pages 301-304

- Support for DVB over IP was implemented. Multiple IP interfaces can be configured in the FAB DVB Interface Configuration utility. For each IP interface you can configure multiplexer IP address and port and transport (UDP or RTP). IP traffic can be bound to a specific IP interface. All DVB Interface features are equally supported on physical and IP interfaces.



FAB SUBTITLE DATABASE

FAB Subtitle Database is used in connection with FAB Subtiter BCAST for storage of subtitle files, transmission playlist management and workflow organization for preparation of subtitle files.

- Searching in FAB Subtitle Database Client has been improved. In addition to searching in all indexed fields (as before) it is now possible to search for specific network, transmission date, automation ID, description, subtitle file and to search for specific values in custom fields. It is also possible to provide a combination of search criteria and filter the results based on the number of subtitle files attached to playlist entries.

Enter search condition

— Search in all indexed fields —

— Advanced search —

Network: CHANNEL 1

Transmission date: is before 18.8.2011 18.8.2011

Automation ID:

Description: bond

Subtitle file:

— Custom fields —

Subtiter:

Status: Ready

— Additional —

Number of subtitle files: 1

Search also in deleted records

Clear search criteria OK Cancel

FAB WEB ACCESS

FAB Web Access is a browser based application where users of FAB Software can view their software licenses and download the latest versions of software.

After logging in, the user is presented with a list of registered licenses. Anyone with a valid serial number can create an account and log in on the following page:

<http://www.fab-online.com/fwa>

The screenshot shows the 'FAB Login' page. It features a dark blue header with the FAB logo and the word 'Login'. Below the header, there is a 'Web Access' sidebar on the left. The main content area contains a message: 'To access your software licenses and online support please login or create a new user account'. There are two input fields for 'Email address' and 'Password'. A checkbox labeled 'remember my email address' is checked. Below the input fields are two buttons: 'Log in' and 'Forgot password'. At the bottom, there is a link 'If you do not have a user account you can create one here' and a button 'Create a new account'.

The screenshot shows the 'FAB Software licenses' page. It features a dark blue header with the FAB logo and the text 'Software licenses'. Below the header, there is a dark blue sidebar on the left with navigation links: 'Web Access', 'Software licenses', 'User profile', 'Request support', and 'Send SMS'. The main content area shows the user's name 'Hello, Istvan Agoston' and a 'Log out' link. There is a search bar with the text 'Filter licenses' and a button 'Copy all licenses to clipboard'. Below the search bar, there are three license entries, each with a status icon (red X, green circle, yellow circle) and a list of details:

Product name	Serial number	Purchase date	Warranty expires on
FT-SUBTITLER 5 MPEG FAB SUBTITLER MPEG EDITION	3 A	2008-09-15	2009-09-20
FT-SUBTITLER LIVE FAB SUBTITLER LIVE EDITION	4 F	2007-08-03	2011-09-02
FT-DVB FAB NFR (Not For Resale) Demo License	4 2	2010-02-22	2011-11-23

Each entry also includes 'License expires on', 'Download software', 'Password', 'Available version', 'Comment', and 'Options'. At the bottom, there is a form to 'Add a new license to the list' with a 'serial number' input field and an 'Add' button.

FAB SOFTWARE ASSURANCE

FAB Software Assurance is a new product available for all FAB subtitling software products.

- FAB software is improved constantly and adapted to new hardware, Windows versions, file formats, protocols and other new developments
- FAB Software Assurance includes Extension of warranty for additional 12 months at an attractive price
- Is much less expensive than buying a software update
- Includes technical support and all (major and minor) software updates
- The software assurance is only available up to 6 months after end of previous warranty. If not bought within this period it is necessary to buy a complete software update which is considerably more expensive